

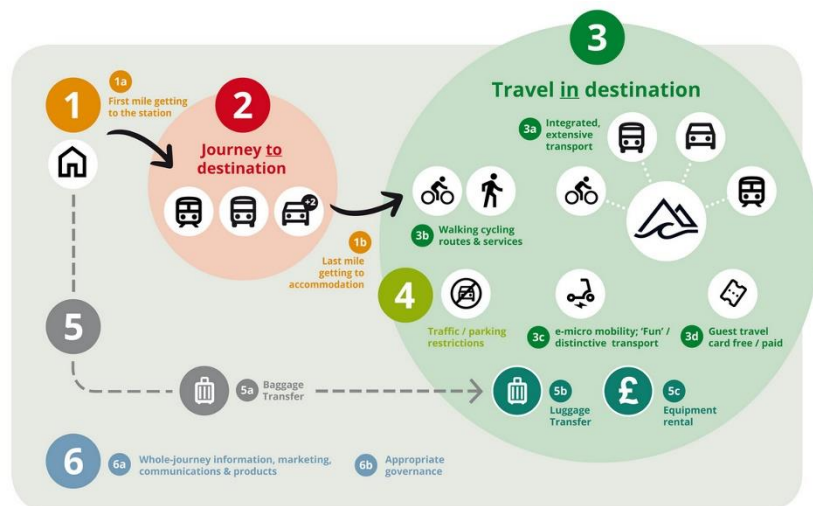
- ➔ So what are the big sources of carbon in rural visitor destinations?
- ➔ What can be done about these – and by whom?
- ➔ How does this translate to really good, fair, high quality visitor transport propositions?

Alistair will use these questions to frame findings from various European destinations, each selected to understand how really good visitor transport works and how it came into being in these places, all translated back to what is possible (and desirable) in the UK. Early-morning-to-late-night buses? Baggage transfers? Last-mile from stations to accommodation? Etc etc

He'll also touch on other ideas – like the enduring reduction in young, professional urban adults having driving licenses and what this means in terms of preparing for future visitor markets.

All this will get wrapped up into thinking about what is possible, what needs to be done (by whom), and (perhaps) why we keep getting the same things wrong(!).

It's about how [this model](#) might help lead to fewer reports of congestion bedlam, and more about great – low carbon - visitor experiences (click on the images for links).



Moment Peak District is clogged with cars from on Easter getaways  
dailymail.co.uk • 5 min read

W News • Latest Wales News • North Wales

**'Serves you right' - walkers whose cars were towed after Welsh mountain hike are told**

Dozens of cars parked illegally at Eryri National Park, also known as Snowdonia, were towed away over the Easter bank holiday weekend



Why you should leave the car behind on your next Lake District holiday  
telegraph.co.uk • 2 min read



We try out a park and ride bus to see if it helps avoid Eryri traffic mayhem  
dailypost.co.uk • 3 min read