



Fremantle
Foundation

**Annual Report
2016/2017**

Tomorrow Man



Night Hoops



Homework Club



100 Hampton Road Kitchen Story



The Fremantle Foundation is a community foundation based in Fremantle that helps create a thriving community in Fremantle, Perth and across WA.

It helps individuals, families, businesses and groups to establish charitable funds to support causes they care about.

Donors make tax deductible contributions then, with support from the Fremantle Foundation, make grants to projects that merge the donors interests with the pressing needs in the community.

This addresses critical community issues and provides inspiring ways for people to give. The Foundation provides ongoing support and advice so donations have maximum long term impact.

For donors, it's like having their own Foundation, but without all the hassles.

From our Patron

I am proud to have life-long links to Fremantle and I'm incredibly fortunate to have been involved with the Fremantle Foundation from the very beginning.

From my unique position I've watched the Fremantle Foundation grow from an idea over a coffee in South Fremantle to become an inspirational organisation making a big difference to Fremantle, Perth and beyond.

What I love about the Fremantle Foundation is how easy it makes it for generous people to give in ways that positively shape the lives of others.

In a fast paced world we look to experts for the best results. If you want to make the biggest impact with your philanthropy, the Fremantle Foundation is a great place to start.

– Peter Bell



FINANCIAL HIGHLIGHTS

for 2016/17

\$1.52M

Total Funds under management
as at June 2017

23

Total number of
grants distributed
in 2016/2017

41

Named Funds

\$692,636.35

Total value of grants distributed

As we grow, we have a greater capacity to support the important issues facing our community in Fremantle, Perth and across WA.



Gary Hasler

From the Chair

In the past 12 months Fremantle Foundation has achieved significant milestones.

Total Grants

On behalf of our donors the Fremantle Foundation distributed just under \$700,000 to exceptional causes in Fremantle, Perth, across WA and even internationally.

Growth of Named Funds

We are delighted to see the growth in the number of Named Funds continue. We encourage everyone with the heart and the means to get involved in philanthropy, and we have worked hard to make the experience easy and rewarding.

Fremantle's Vital Signs

For the first time we have released a report that shows both the hard data behind the Fremantle community's biggest social challenges. And the stories that bring them to life. Fremantle's Vital Signs focuses on the level of disadvantage in Fremantle. But the report resonates to other areas because we know it's a similar story across Perth and WA.

I want to thank all donors who have contributed to the Fremantle Foundation this year. **Every dollar counts. All donations matter.**

Fremantle Foundation donors are thoughtful, caring, intelligent and ambitious. They are forward thinking people who want to change the world around them.



Dylan Smith

From the CEO

It continues to be both inspiring and rewarding to work on a daily basis with generous donors who are making a difference to the lives of other people through their giving.

Our collective challenge is to address society's immediate needs by supporting established and ground breaking organisations leading the ongoing effort for social change.

With 41 Named Funds now established by individuals, families, business or groups with the Fremantle Foundation, the combined contributions are making a significant difference.

Thank you to all our donors and welcome all new donors who wish to take up this challenge.

Local giving in a **global** **context**

Based in Fremantle with a strong focus on community giving, we support donors interests in Fremantle, Perth, throughout WA and the world.



Inspired giving. Groundbreaking change.

Sculpture by the Sea
Cottesloe / Fremantle, WA

Greater Perth

**Fremantle Men's
Community Shed**
(auspiced by West
Australian Men's Shed
Association)

**Night Hoops (auspiced by
Outcare)**
Night Hoops Southside

**Museum of Moving
Objects**

**CircusWA (auspiced by
Fremantle PCYC and
Australian Cultural Fund)**
Scholarship Program

Fremantle, WA

**Caralee Community School
(auspiced by Schools Plus)**
*Caralee Community School
Homework Club*
Willagee, WA

**Ishar Multicultural
Women's Health Centre**
*Support program for women
with lived experience of
Family and Domestic Violence*
Mirrabooka, WA

Ausum Initiatives
Ausum Biz Camp
Western Australia Ballet
Zero2Hero Inc.
Camp Hero
Perth, WA

Making positive change

Merenda Fund

Established by Santo and Joyce Merenda to provide inspiring opportunities for Indigenous and disadvantaged young people.

Santo and Joyce Merenda established the Merenda Fund as a named fund within the Fremantle Foundation in early 2012.

The Merenda family have a long and proud association with Fremantle after stepping off the boat at Fremantle Port as Italian migrants in the 1960s.

The Merenda Fund has supported a free weekly Circus Workshop at the Fremantle PCYC to inspire Indigenous young people with the magic of circus. And now offers scholarships for talented students to attend mainstream Circus WA workshops.

For Santo and Joyce it's about providing kids with an equal opportunity to thrive.

Our fund allows us to be involved with decision-making and see the impact our giving makes. We are also proud to be leaving a legacy for future generations.

— Santo Merenda

“

It's a huge confidence boost for the kids, who may not have the opportunity to do anything outside their immediate neighbourhood. And circus particularly really works for them, because the resilience they have is something they really need in the circus arena. There is a real strength in the mind of these kids that really shines through.

— Nel Simpson, CircusWA



Business connecting with community

Ardross Group

How one company is creating a legacy in two communities

- **Growing Jurien Bay Fund**
- **Growing MillBridge Fund**

With \$300 gifted from every lot sold in their regional developments, Ardross Group have quietly created significant endowment funds that can now support the long-term health of the Jurien Bay and Millbridge communities.

CEO of Ardross Group, David Lantzke, said he was proud of the role his company play in the local community in which they operate and the social impact being made.

While in Bunbury, the Growing MillBridge Community Fund has grown to over \$305,000 and will be used strategically to improve the local community.

“

In Jurien Bay we've created a fund worth over \$175,000 that will be managed for the future by the Fremantle Foundation and be used to support great community projects. We also made a recent contribution of \$500,000 to a fantastic project that has seen a recreational coastal path be constructed between Jurien Bay and Cervantes - an exciting iconic piece of infrastructure for the region.

– David Lantzke



Celebrating Sophie

Sophie Smith Fund

A fund to recognise and celebrate the life of Sophie Smith.

Sophie Smith was just 27 when she lost her battle with cancer.

Sophie was passionate about reading and understood what an important role it played in her knowledge of the world around her.

Sophie also loved a wide range of music genre and comprehended its ability to communicate within and across cultures. She believed an appreciating the value of literacy and music well before adulthood enables their roots to grow deeply, with positive, healthy and lifelong effects.

As a result the Sophie Smith Fund supports programs for literacy and music for young people.

Through her journey Sophie also developed a strong appreciation for the ground breaking work of the Australian Cancer Research Foundation.

She believed world class medical research was the best investment we can make for the prevention and treatment of cancer.

Through donations from family and friends a grant was distributed to the ACRF.

Research is the key to beating cancer. That's why, at the Australian Cancer Research Foundation, we are committed to supporting Australia's best researchers in their search for the cures.

– ACRF





\$1,000
donation
=
\$100,000
of impact

Joining together to give

Impact100 Fremantle

In a remarkable show of community spirit and generosity the Impact100 Fremantle group of donors have united to give \$475,000 in donations to Fremantle charities since 2013.

The group asks for members to contribute \$1,000 annually. Then donations are pooled together to create a game-changing grant of \$100,000. All donors are invited into the decision making process and vote to decide the winner.

Night Hoops

Focussed on participation,
engagement & respect

Night Hoops runs regular six-week basketball tournaments on Saturday nights in Fremantle area and across WA. These tournaments open the way to wider lessons in belonging and participation for disadvantaged young people.

The locked-door events combine basketball games with compulsory life skills workshops and a healthy meal for all participants.

“

The Fremantle Foundation is exceptional at bringing our community together at a grass roots level. I am proud to be a donor of an organisation that is connecting local people and creating massive impact.

– Taylor Vagg - Impact100 Fremantle Donor





In 2016/17 Night Hoops was the recipient of the Impact100 Fremantle major grant of \$100,000.



DONORS IMPACT

The Kai Eardley Fund

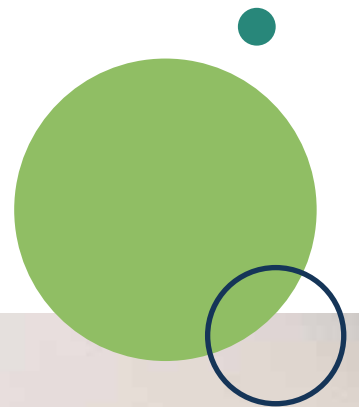
Shaping the men of tomorrow

With staggering rates of adolescents facing mental health issues, the Kai Eardley Fund supports workshops for young WA blokes that challenge destructive and life threatening ideas on what it means to be a man.

The workshops are brutally honest, ground breaking and inspiring a new, more emotionally aware man of tomorrow.

“ I felt that the “Tomorrow Man” workshop was one of the best workshops I have ever attended. The honesty put forward by the boys was unparalleled... we left learning so much about our peers. Just knowing the monumental problems some people have to go through was an eye opener.

– Quote from a Tomorrow Man





The workshops are brutally honest,
ground breaking and inspiring a new, more
emotionally aware man of tomorrow.



The Fair Tradie Project

Changing lives in Uganda

For Luke Ray and a bunch of WA tradies, overseas poverty is a cause they couldn't ignore. Since 2010 a team of willing people have visited Africa to build houses, support communities and improve health outcomes.

A recent grant lead to the completion of a house for a widow and her 3 children. Soon a further 7 adopted children will be welcomed into the family. Meanwhile a second structure was completed to house a poultry initiative that will provide income, food and security to the community.





Since 2010 a team of willing people have visited Africa to build houses, support communities and improve health outcomes.



DONORS IMPACT

The Caralee Community School Homework Club

Lessons learned after school

The Caralee Community School is increasing school attendance and driving academic performance through a unique Homework Club.

It helps student who are at risk of disengaging and falling behind. When a student's attendance drops below 60% the program provides an Education Assistant to help them with one-on-one support to boost their literacy and numeracy.

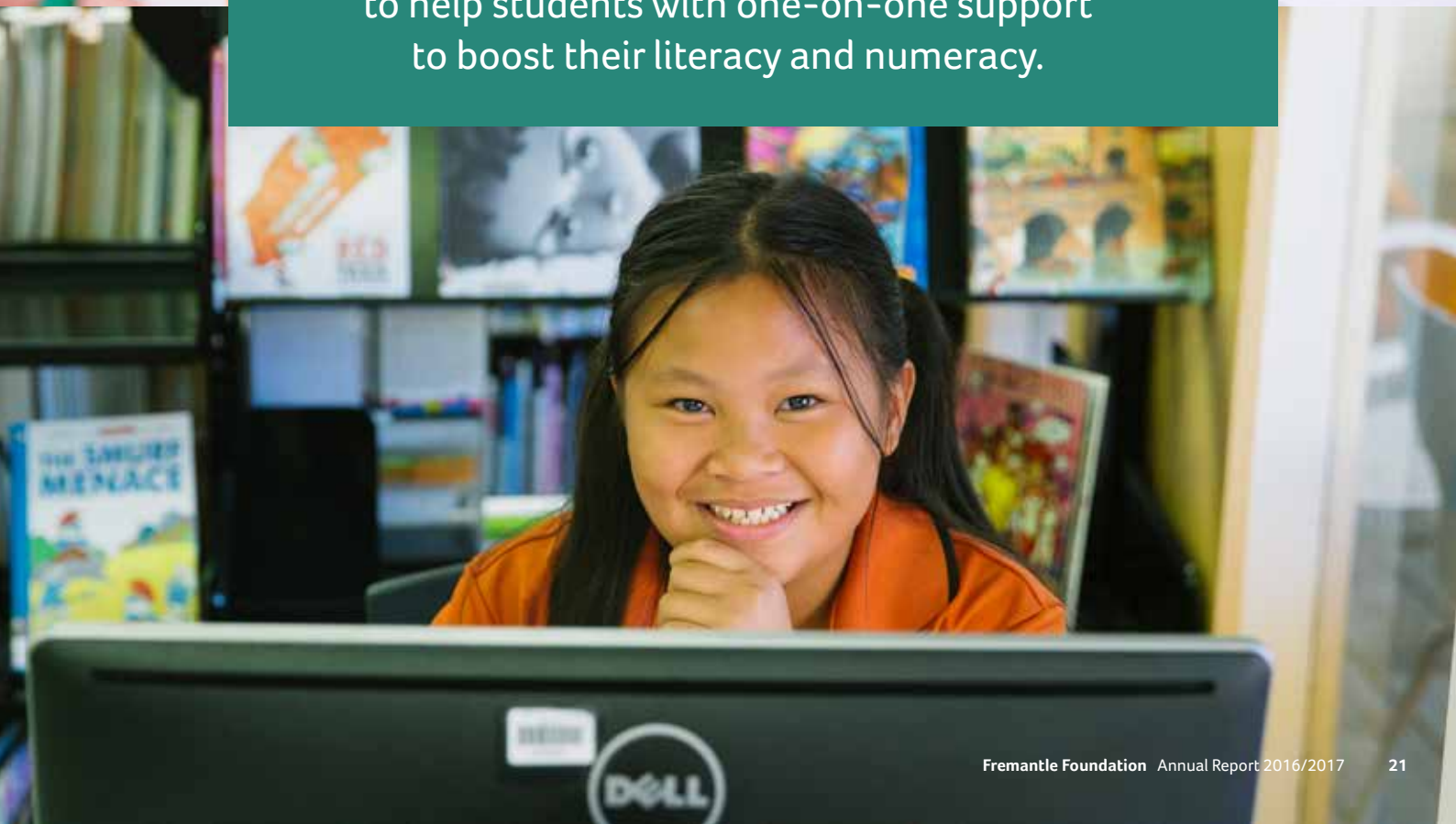
And then after school, the same Education Assistant supervises the Homework Club where students complete school work and assignments.

This successful project has helped improve school attendance and build confidence and pride in the students.





The program provides an Education Assistant to help students with one-on-one support to boost their literacy and numeracy.



Fremantle's Vital Signs

In a first for the Fremantle community, this year we created a snapshot of the vital statistics of Fremantle. In Fremantle's Vital Signs we looked at four compelling areas: Gap Between Rich and Poor, Health, Learning and Belonging.

Across these areas there is one clear story. The Fremantle area has strong indicators of wealth, but also significant pockets of disadvantage.





GAP BETWEEN RICH AND POOR

Housing diversity and housing stress remain key issues in Fremantle.



AIHW defines housing stress as spending more than 30% of gross household income on housing costs.



'Rental stress' describes households at risk of experiencing difficulty meeting their rental costs. (ABS)



...was affordable for households with an income less than **\$68,000**¹⁰



HEALTH

Our mental health and the dire health effects on people experiencing homelessness are important issues highlighted in the data.



of people accessing mental health support at 360 Health + Community service centres across Perth in the past 12 months were 10-19 year olds.

20-29 year olds had the same rate.¹⁴



have a combination of serious health concerns including psychological, medical and substance use.¹⁷



LEARNING

Most schools in the Fremantle area are doing well, but some need additional resources to help their students thrive.



BELONGING

In Fremantle we pride ourselves on a strong community spirit, but who is missing out?

Index of Community Socio-Educational Advantage (ICSEA) is an indicator of the level of educational advantage of students who go to this school. An average score is 1000.

Attendance level is the proportion of students who attend at least 90% of the time.

Primary Schools in the City of Fremantle ²²



ICSEA
All 12 have above average scores.



Attendance
4 schools are experiencing attendance levels for more than 20% of their students.



1,905 people provided unpaid care for children other than their own.²⁹



5000 visits

The Fremantle PCYC centre has nearly 5,000 visits per month to Youth Space.²⁸

Named Fund Holders

Bollen Fund	Sick children, Homelessness and the very poor
Carter Family Fund	Emerging community needs
CircusWA Future Fund	Supporting CircusWA
Fair Tradie Project Fund	Building projects in areas of disadvantage
Fremantle Foundation Vital Fund	Health, Belonging, Learning and Gap Between Rich and Poor
Fremantle Players Community Giving	Emerging community needs, including youth at risk
Fund for Children and Young People	Children and young people
Hasler Family Fund	Emerging community needs, including education for disadvantaged young people
Growing Jurien Bay Fund	Supporting the Jurien Bay community with key social and built infrastructure
Growing MillBridge Fund	Supporting the Jurien Bay community with key social and built infrastructure

High Tide Future Fund	Supporting the High Tide exhibition
Howard Read Fund	Emerging community needs
Impact100 Fremantle	Emerging community needs - focus is decided annually
John Cummins Memorial Fund (WA)	Scholarships for schooling, training and apprenticeships
J M Wright Memorial Fund	Emerging community needs including support for Families, children and the Arts
Jin Memorial Initiative	Migrant and Refugees, Social Enterprises, Mental Health
Kulbardi Fund	Indigenous business and entrepreneurs
Liberty Fund	Women in need
M & C Staff Fund	Emerging community needs
MP+ Fund	Emerging community needs
Merenda Fund	Indigenous young people and the arts
Mike's Walk Fund	Supporting Fremantle Men's Community Shed



Moore & Moore Cafe Fund	Emerging community needs, including public bike facilities
R & C Nanni Partnership Fund	Education in Hilton, Willagee, Winthrop
Nectar for Women Fund	Empowering Women
Newborn Mothers Fund	Empowering Women
Pilbara Fund	Getting young people back on country and connecting them to elders
Prometheus IV Fund	Emerging community needs
Renee Gardiner Fund	Education, Mental Health
Robert Gordon Fund	Emerging community needs, including education for disadvantaged young people
Smith & Jones Fund	Emerging community needs, including support for disadvantaged young people

Sophie Smith Fund	Cancer Research, Literacy and Music for young people
The Kai Eardley Fund	Adolescent Mental Health
The Merlin Fund	Animal welfare
The Seacorp Fund	Homelessness and Mental Health support for men in Fremantle
The TAMS Group Fund	Emerging community needs
The Townes Fund	Emerging community needs in the Fremantle area
Urban Indigenous Fund	Preservation of Aboriginal Culture through economic development, education and arts
Vieira Family Fund	Education in Hilton, Willagee, Winthrop
Yogi Vibes Fund	Disadvantaged children and their families



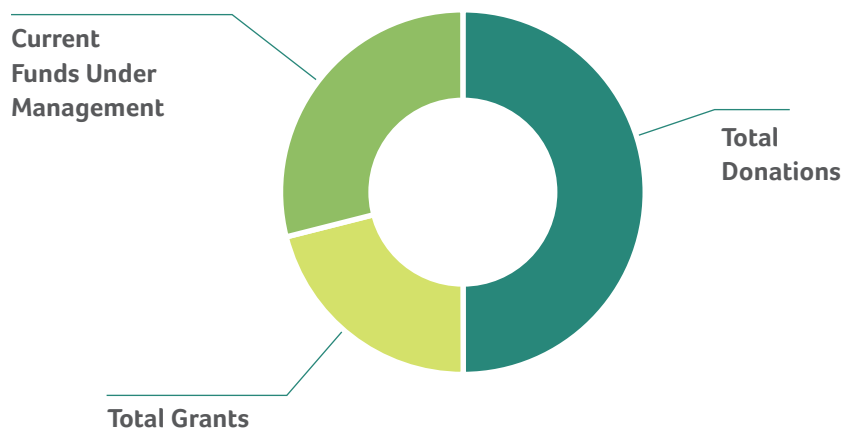
Grants distributed 16/17

Organisation	Project	Named Fund/Funds
FRRR	Jurien Bay Coastal Path Project	Growing Jurien Bay Fund
Fremantle Men's Community Shed (auspiced by West Australian Men's Shed Association)		Impact100 Fremantle
Night Hoops (auspiced by Outcare)	Night Hoops Southside	Impact100 Fremantle
Perth Symphony Orchestra		Impact100 Fremantle
Museum of Moving Objects		Impact100 Fremantle in partnership with Spinifex Trust
ACRF		Sophie Smith Fund
CircusWA (auspiced by Fremantle PCYC and Australian Cultural Fund)	Scholarship Program	Merenda Fund
Ausum Initiatives	Ausum Biz Camp	Kulbardi Fund
Fair Tradie Project (auspiced by DADAA)	Fair Tradie Project	Fair Tradie Project Fund
Caralee Community School (auspiced by Schools Plus)	Caralee Community School Homework Club	Vieira Fund, Nanni Fund and Gordon Fund
FYA	Pilbara Basketball Trip	Pilbara Fund
Sculpture by the Sea		Howard Read Fund
McGrath Foundation		Howard Read Fund
Western Australia Ballet		Howard Read Fund
Rotary Australia Overseas Fund	Family Support Project in Battambam, Cambodia	Howard Read Fund

Financials

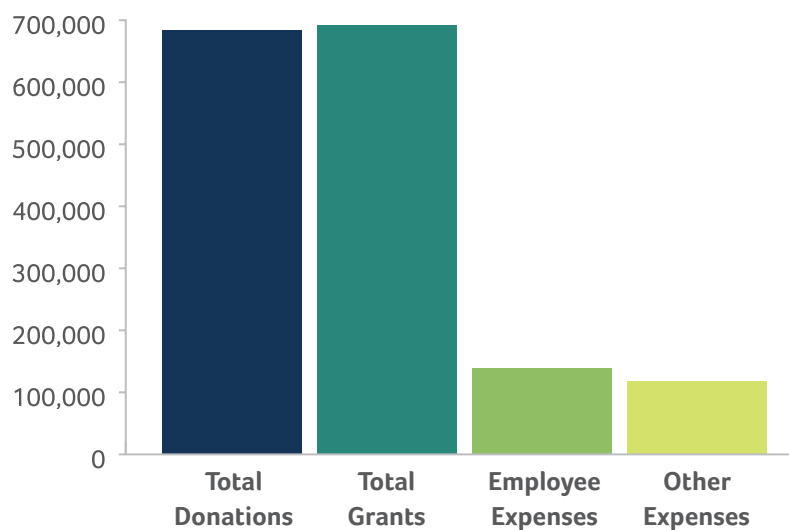
2010 - 2017

Total Donations	\$2,624,828
Total Grants	\$1,107,219
Current Funds Under Management	\$1,520,607



2016/2017 Financial Year

Total Donations	\$683,831
Total Grants	\$692,636
Employee Expenses	\$139,532
Other Expenses (including events, marketing, rent etc.)	\$118,493



Find Out More

You're invited to contact Dylan Smith, Executive Officer, to discuss how you can make a difference to the causes you feel passionate about.

P 0410 202 610

E dylan@fremantlefoundation.org.au



fremantlefoundation.org.au

Fremantle Foundation

PO Box 1397, Fremantle WA 6959
92 Adelaide Street, Fremantle WA 6160

Australian Charity Number: 992 104 836
ABN: 19 992 104 836

Fremantle Foundation Capacity Donors

Boutique Advisers
Annie and Peter Duncan
Kerry and Dominic Maddestra
Jan and Gary Ryan
Chris and Tim Ungar

Fremantle's Vital Signs Partners

