



FOCUSED **LIFE-FORCE** ENERGY
SUPPORTING A HIGHER LEVEL OF CONSCIOUSNESS

Mitigate EMFs Around You and Your Animals!



*Featured Speakers
Jeffery Stegman and Clayton Stedmann*

How does prayer work?



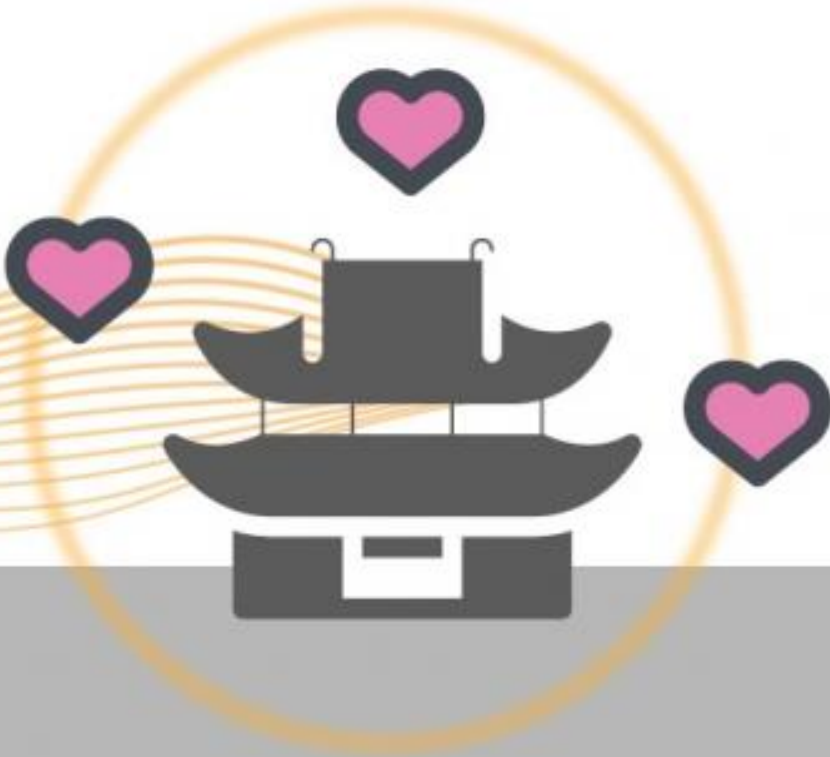
How does FLFE work?



FLFE MACHINE

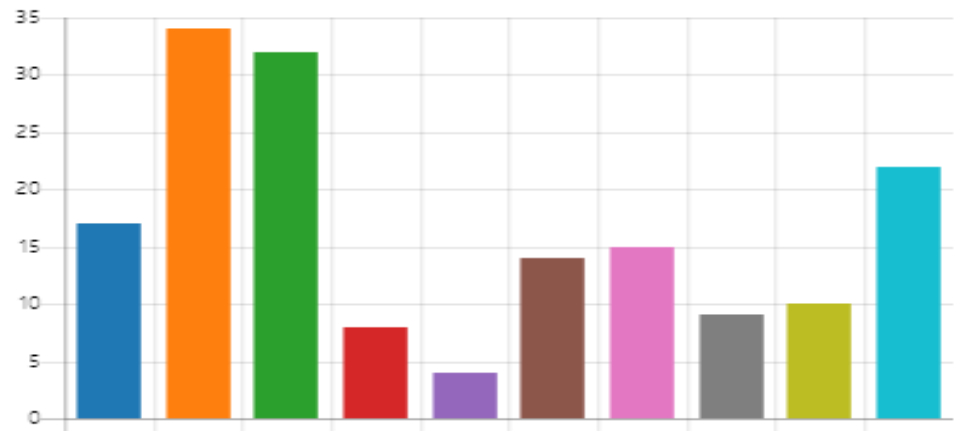


FLFE PROGRAMS



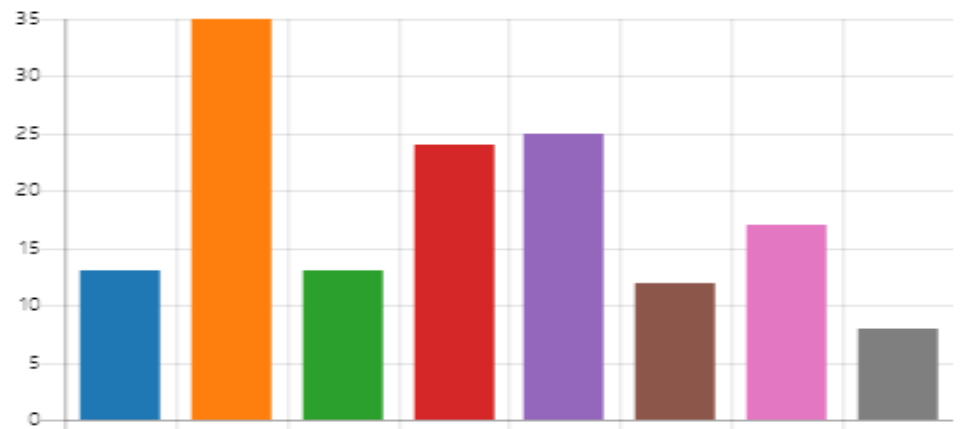
1. Please note changes since the start of the FLFE EMF Mitigation program on the effects of EMFs on your health?

● Less or no headaches	17
● More energy, less fatigue / tired...	34
● Better sleep	32
● Decreased or no dizziness	8
● Decreased or no nausea	4
● Less or no heart palpitations	14
● Decreased or no digestive probl...	15
● Reduced experience of inflamm...	9
● Decreased or no skin problems (...)	10
● Other	22

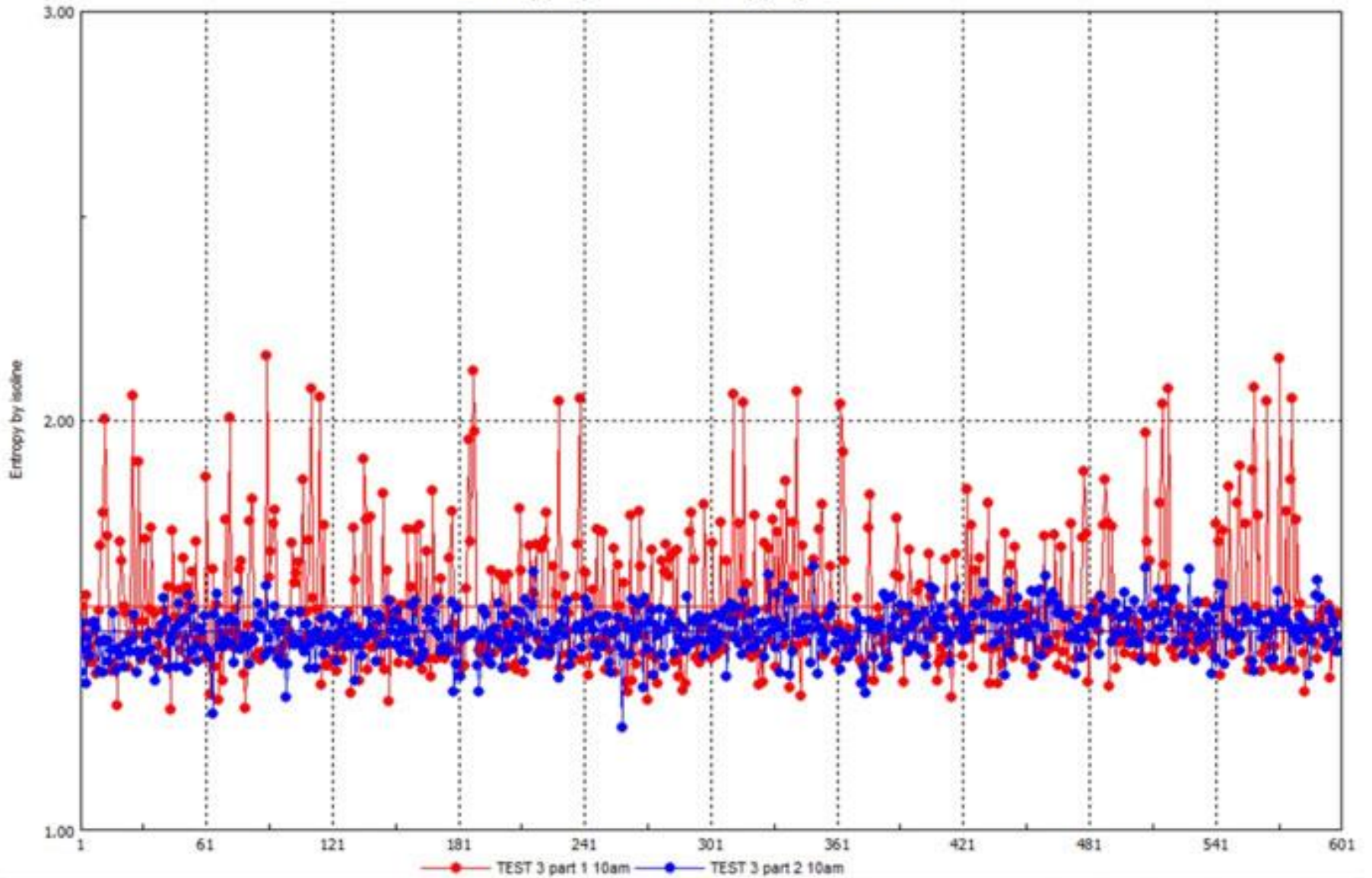


2. Please note changes since the start of the FLFE EMF Mitigation program on negative emotional or psychological effects of EMF?

● Nothing noticed	13
● Decreased feeling of stress	35
● Decreased or no depression / n...	13
● Decreased or no anxiety / fear	24
● Decreased or no confusion / bra...	25
● Increased short-term memory	12
● Decreased anger / Irritability	17
● Other	8



Plots of static GDV image parameters
Entropy by isoline Entropy by isoline



GDV Scientific Laboratory

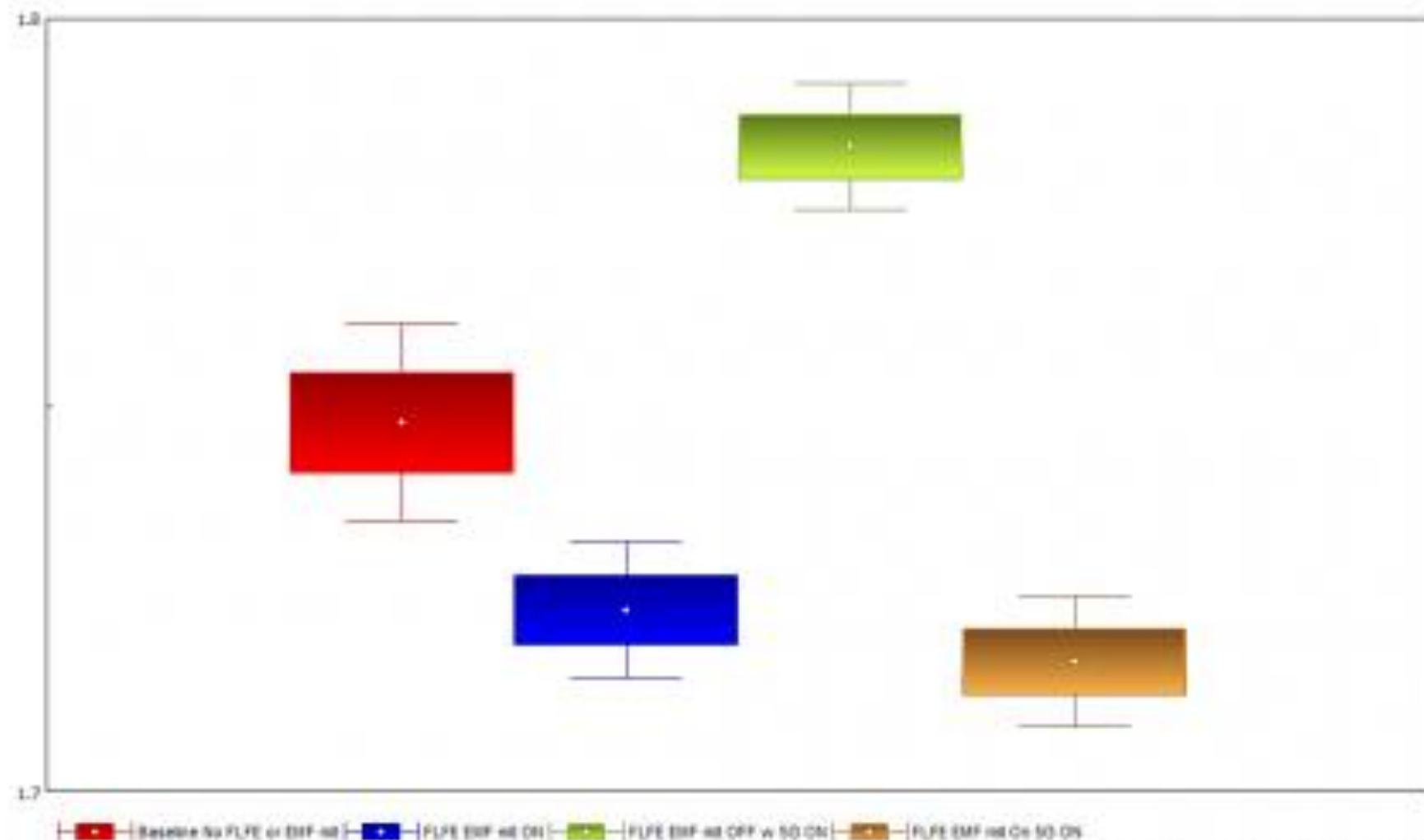
Baseline No FLFE or EMF int. Mean: 1.755, Std. error: 0.003, Confidence interval: 0.008

FLFE EMF int ON. Mean: 1.754, Std. error: 0.002, Confidence interval: 0.004

FLFE EMF int OFF w/ 5G ON. Mean: 1.753, Std. error: 0.002, Confidence interval: 0.004

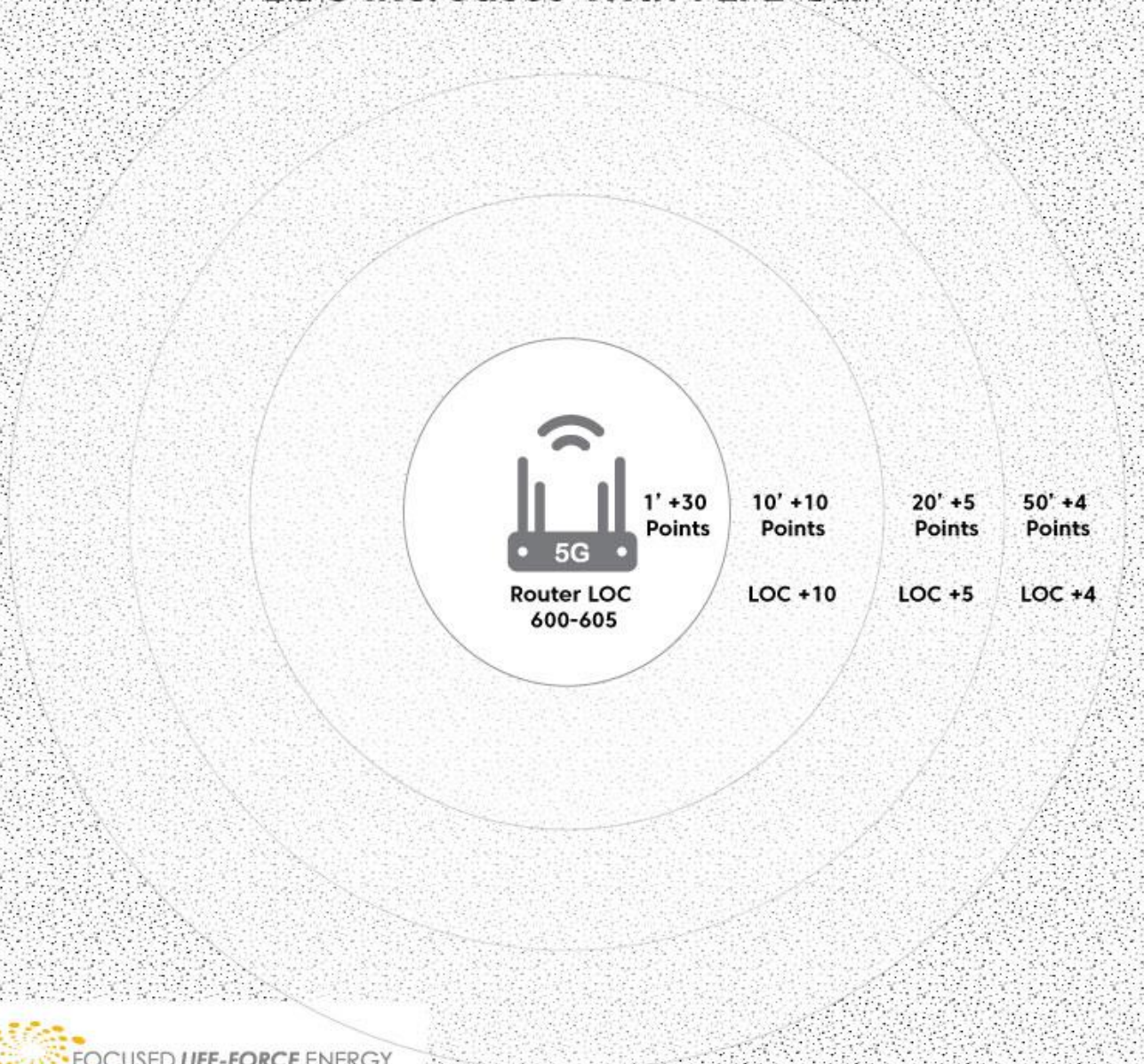
FLFE EMF int On 5G ON. Mean: 1.751, Std. error: 0.002, Confidence interval: 0.004

By ANOVA multi factor test samples are statistically dissimilar; $p = 0$



FLFE 5G Router Testing

LOC Increases With FLFE On









FOCUSED *LIFE-FORCE* ENERGY

SUPPORTING A HIGHER LEVEL OF CONSCIOUSNESS