

BRAVDEN



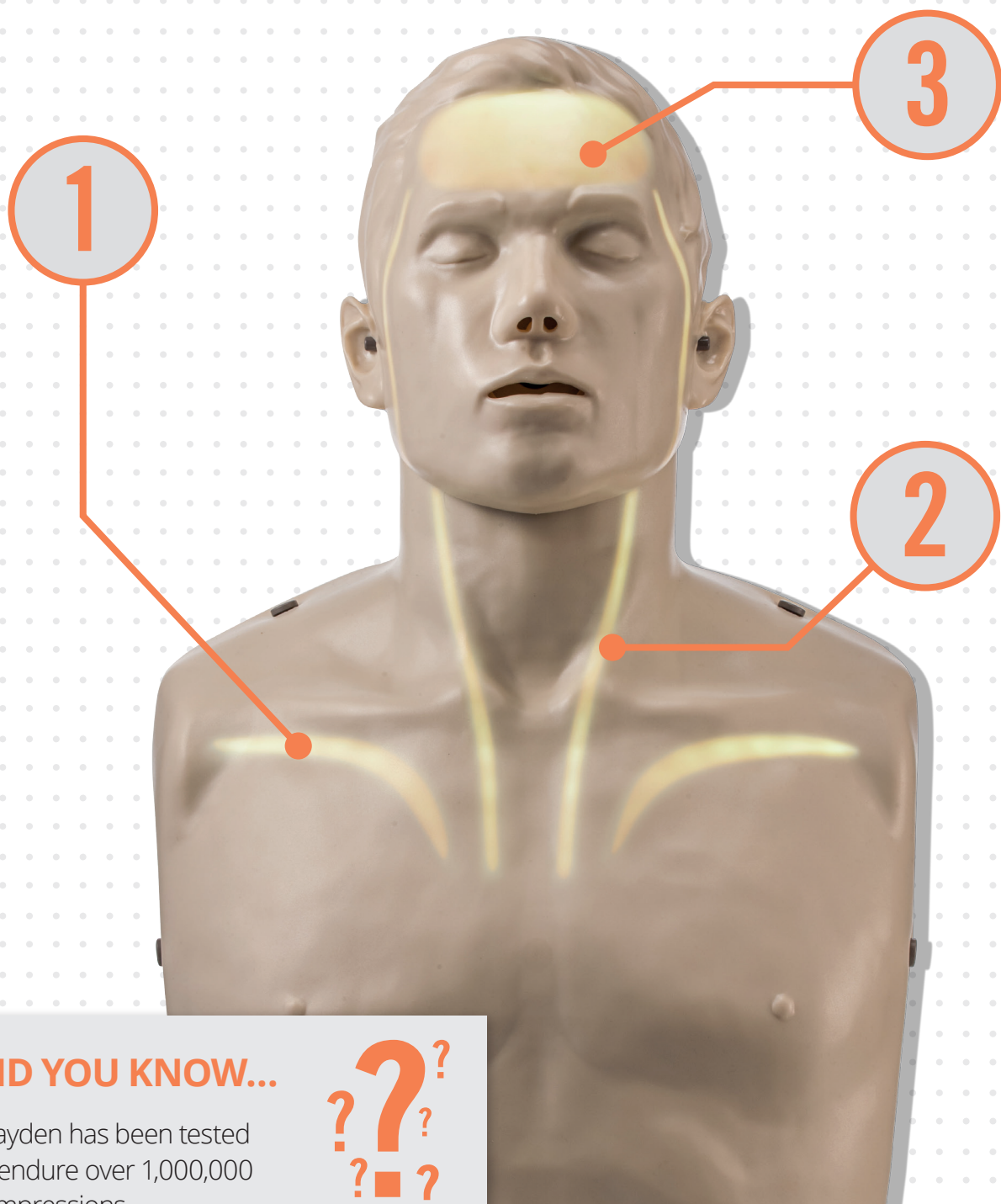
ILLUMINATING CPR

The First Manikin that helps you
Visualise the effects of CPR



- ✓ Builds Confidence
- ✓ Promotes Understanding
- ✓ Aids Knowledge Retention
- ✓ Improved Ventilation
- ✓ Fully compliant with both AHA and ERC 2021 Guidelines

Three interrelated sets of LED Lights give real time feedback of CPR performance & function *



DID YOU KNOW...

Brayden has been tested to endure over 1,000,000 compressions



* Brayden uses advanced sensors to detect and analyse the effectiveness of CPR. In default mode the sensors detect compressions in line with AHA 2021 guidelines. Brayden can simply be switched to a different mode to detect compressions in line with ERC 2021 guidelines.

1

CHEST COMPRESSION INDICATING LIGHTS

These illuminate to represent the volume of blood being circulated by the chest compressions. In default AHA mode this is when compression depth is at least 5cm⁽¹⁾. In ERC mode this is when compression depth is at least 5cm but not more than 6cm⁽²⁾.

1. AHA Basic Life Support Provider Manual (February 2016) Page 3,19,20 and 30
2. ERC Guidelines for Resuscitation 2015 (Edited by K. Monsieurs & J. Nolan), Resuscitation 97 (2015) Pages 1-80

2

BLOOD CIRCULATION INDICATING LIGHTS

These illuminate to represent the flow of the blood from the heart to the brain. The speed of the blood flow shown varies according to the depth and speed of the compressions. These will flash to indicate the rate between 100 and 120 per minute and will remain permanently lit if the rate is above 120 per minute.

3

CPR QUALITY INDICATING LIGHT

This illuminates to represent that blood is reaching the brain. This will only light up with correct compression depth, compression rate and full chest release.

The ERC 2015 Guidelines for Resuscitation identify the usefulness of feedback from devices during CPR training as a way of improving trainees' skill acquisition and retention. The Brayden manikin achieves this in an innovative and effective way and allows trainers to assess objectively whether chest compressions are being delivered in accordance with recommendations, rather than simply relying on making a subjective estimation.

Dr Carl Gwinnutt, Emeritus Consultant, Salford Royal Hospitals NHS Foundation Trust

This training manikin is a useful addition to those currently available. The light effects to show likely sufficient coronary and cerebral flows is novel and will be an effective stimulus for improving the quality of compressions.

Professor Douglas Chamberlain

The following images illustrate the way in which the **indicating lights** correspond to CPR techniques



Correct Technique

The brain will only illuminate with correct compression depth, compression rate and full chest release



Compression depth too shallow



Compression rate too slow



Compression rate too fast

DID YOU KNOW...

Brayden can illuminate 160,000 compressions with 1 new set of alkaline batteries



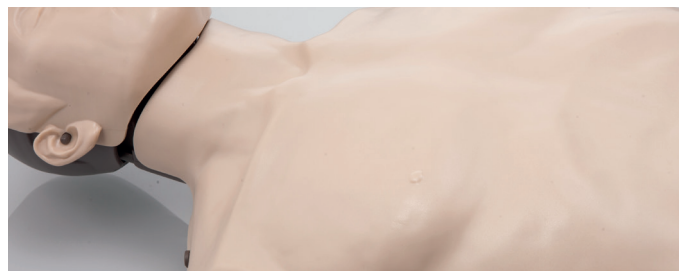
Brayden Manikin

Features



Improved Ventilation

Oral and nasal passages which allow realistic nose pinch.
Head tilt and chin lift for opening airway.
Highly realistic chest movement with correct ventilations.
Can be used with an adult BVM.



Anatomically correct. Harmless, latex-free skin. Easy AED training pad removal. RoHS & REACH compliant.



Audible feedback reinforces correct compression depth (Clicker ON/OFF)

I believe that the Brayden manikin is a new concept and a good tool for teaching CPR to the "next generation" of lifesavers to help save lives. The Brayden manikin gives the learner real time feedback on their CPR performance in an enjoyable and modern visual and intuitive way.

**Dr Federico Semeraro,
Consultant in Anaesthesia and
Intensive Care, Bologna**

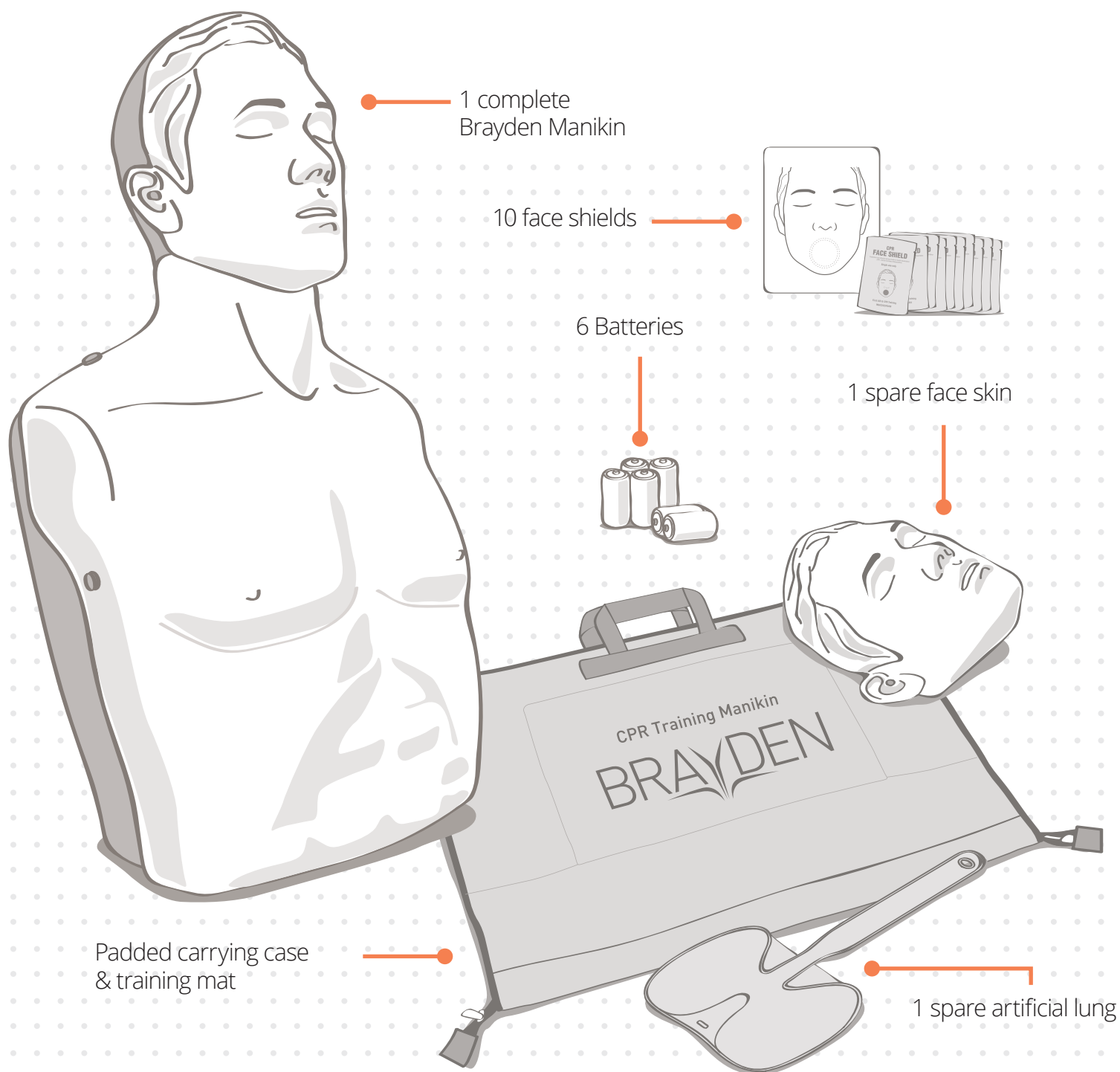


6 set of alkaline batteries can power 160,000 compressions. AC supply optional.



Air vent reduces the risk of cross contamination. Air from Brayden's disposable lungs exits through the back of his head. This means students never come in to contact with exhaled air.

Brayden Kit Contents



DID YOU KNOW...

Brayden uses state-of-the-art technology with fewer moving parts and less wires resulting in a much longer life



Brayden Accessory Matrix



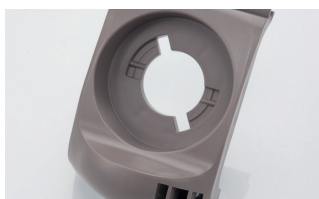
Face Skin
(IM13-SA01)



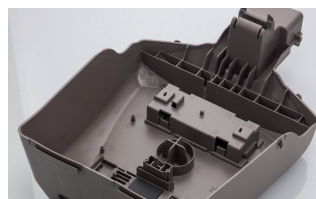
Body Skin
(IM13-SA02)



Head Unit
(IM13-SA03)



Chin Piece
(IM13-SA04)



Body Frame
(IM13-SA05)



Rib Frame
(IM13-SA06)



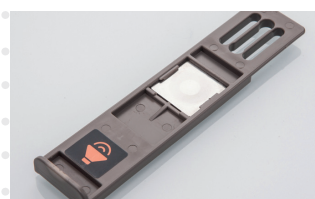
Mouth Connector
(IM13-SA07)



Airway Valve
(IM13-SA08)



Lung Bag
(IM13-SA09)



CPR Clicker Unit
(IM13-SA10)



CPR Clicker Actuator
(IM13-SA11)



Spring
(IM13-SA12)



Instruction Manual
(IM13-SA14)



Face Shields
(Pack of 30)
(IM13-SA15)



**Carry Case &
Training Mat**
Carries 1: (IM13-SA13)
Carries 4: (IM13-OA02)



Optional AC Adapter
(IM13-OA01)

The Brayden CPR training manikin is a new tool which helps improve the comprehension of the effects of cardio-cerebral resuscitation and facilitates the evaluation of the quality of chest compressions.

**Dr Pascal Cassan, Head of the Global
First Aid Reference Centre of the
International Federation of Red Cross
and Red Crescent Societies**

Additional Items
Non-rebreathing Rubber (Pack of 24) (IM13-SA16)
Airway Filter (Pack of 50) (IM13-SA17)
Tracksuit Jacket (IM13-OA03)

BRAYDEN CPR training manikin

Technical Specifications

Type	Torso
Display visual flow of blood from the heart to the brain:	Yes
Chest compression depth and speed measuring sensor:	Yes
Chest movement with ventilation:	Yes
Head tilt and Chin lift for opening airway:	Yes
Airway system:	Non-breathing with disposable lungs
Ribs, Xiphoid:	Yes
Clicker (Audible feedback):	Yes
Length:	59 cm
Weight:	3.1 kg (6.8lb) (including batteries)
Packed weight:	5.3 kg (G/W), 4.3 kg (N/W)
Dimensions packed:	37 cm X 26 cm X 62 cm
Operating temperature:	15°C to 30°C (59°F to 86°F)
Storage temperature:	-10°C to 50°C (14°F to 122°F)
Humidity:	Relative humidity between 5% and 95%
Disinfection:	Brayden facial parts tested for material compatibility. Safe for use with sterilising wipes, sterilising solutions and in the dishwasher
Warranty:	2 years (excluding consumables)
Power:	AC adapter (Input AC 100 ~ 260V, Output DC 9V 1A) / Battery C type 1.5V (6 batteries)

Product Options

Brayden Manikin with Illumination Lights (White) (IM13)

Brayden Manikin with Illumination Lights (Red) (IM13-RED)

Brayden Manikin Basic (No Illumination Lights) (IM13-S)

For your local distributor

📞 +44 (0)3333 44 55 34

✉️ enquiries@innosonian.eu

💻 innosonian.eu

The logo for BRAYDEN features the brand name in a bold, sans-serif font. The letter 'Y' is stylized with two orange, flame-like or leaf-like shapes extending upwards and outwards from its center, creating a distinctive graphic element.