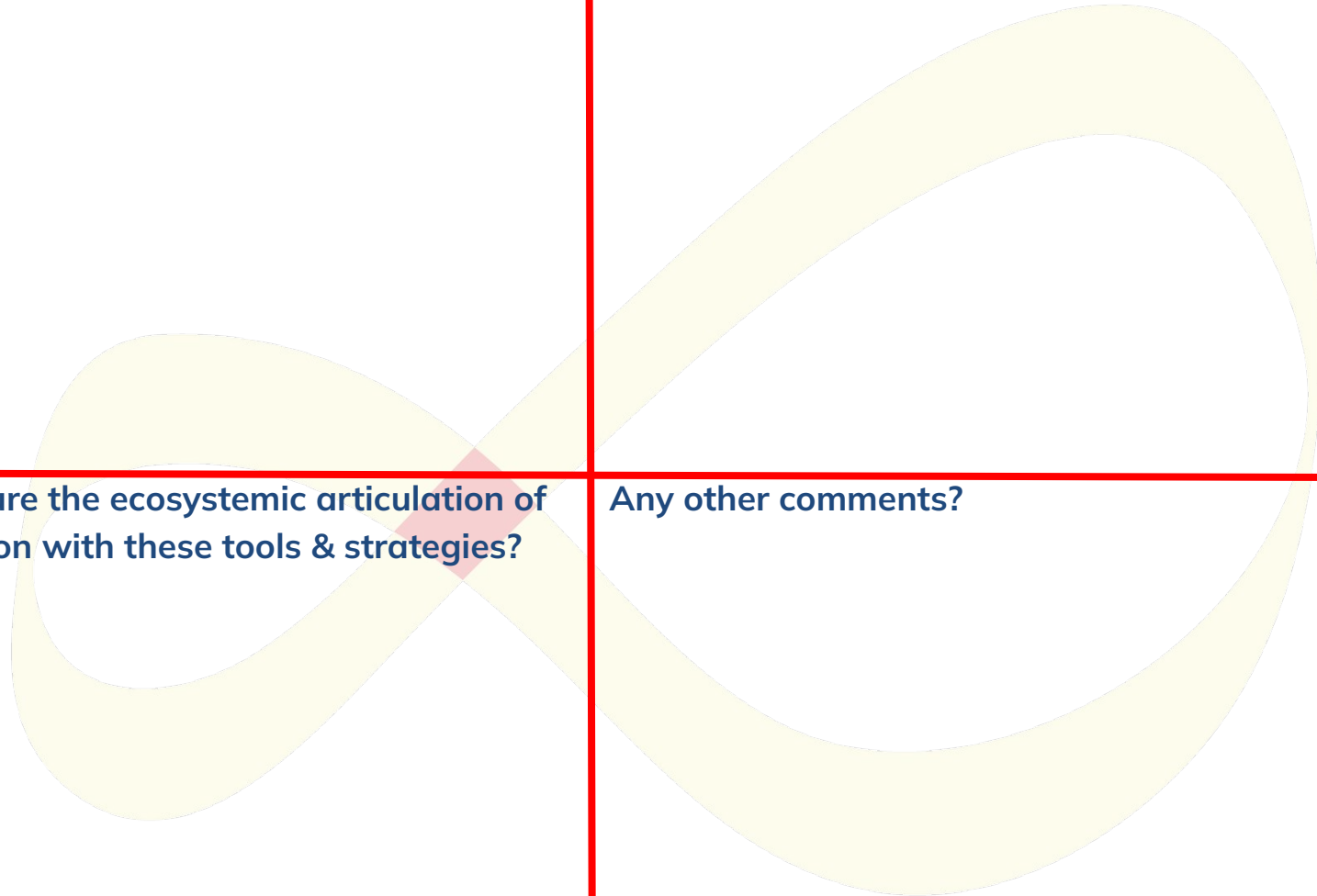


LOCAL: How do you think these tools & strategies can bring value to your work?

BIOREGIONAL / THEMATIC: Do you see any value-adding synergies with other organisations or projects? If so, which?

EU: How can we nurture the ecosystemic articulation of community catalysation with these tools & strategies?

Any other comments?



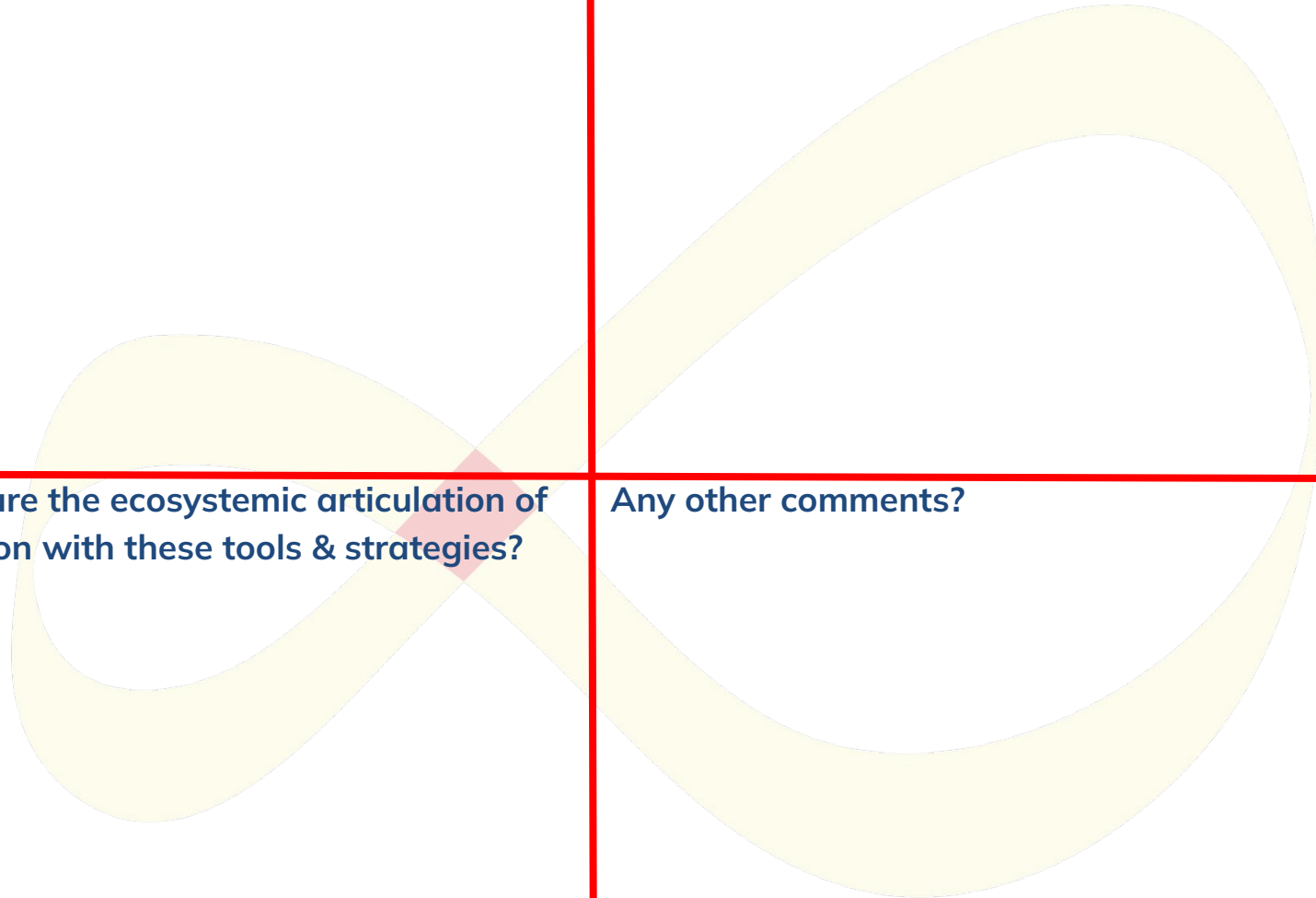


LOCAL: How do you think these tools & strategies can bring value to your work?

BIOREGIONAL / THEMATIC: Do you see any value-adding synergies with other organisations or projects? If so, which?

EU: How can we nurture the ecosystemic articulation of community catalysation with these tools & strategies?

Any other comments?





LOCAL: How do you think these tools & strategies can bring value to your work?

BIOREGIONAL / THEMATIC: Do you see any value-adding synergies with other organisations or projects? If so, which?

EU: How can we nurture the ecosystemic articulation of community catalysation with these tools & strategies?

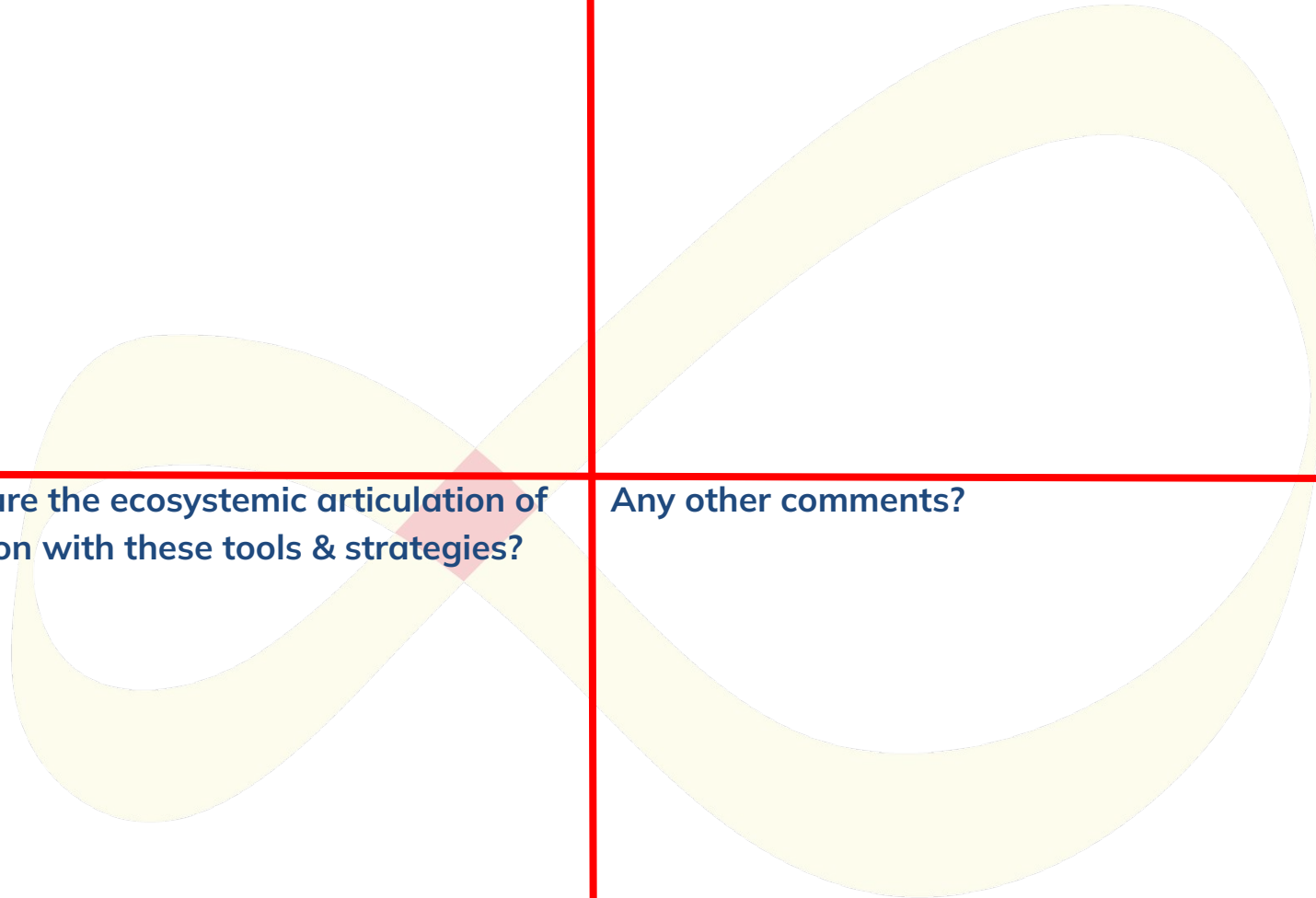
Any other comments?

LOCAL: How do you think these tools & strategies can bring value to your work?

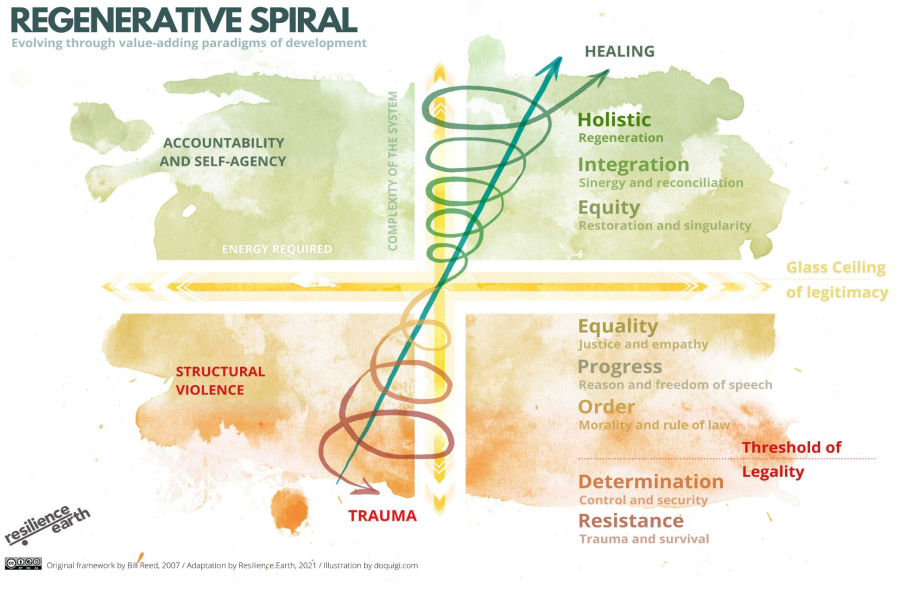
BIOREGIONAL / THEMATIC: Do you see any value-adding synergies with other organisations or projects? If so, which?

EU: How can we nurture the ecosystemic articulation of community catalysation with these tools & strategies?

Any other comments?



What is the dominant paradigm of your bioregion?
 What is the paradigm you are working towards?

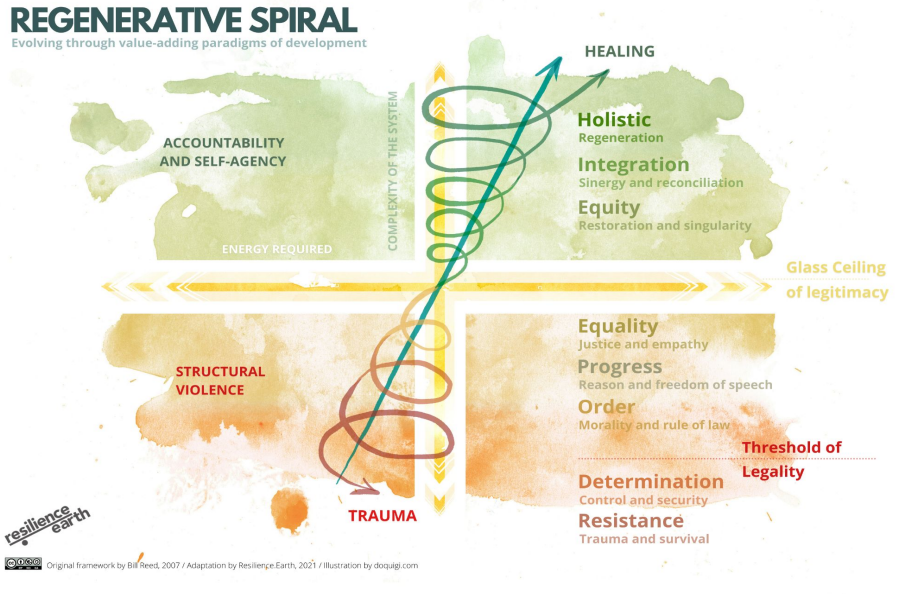


What support do you need from your local government and other stakeholders to do the work you want to do?

What restrictions do you face that prevent you from moving towards a more regenerative paradigm?

What are the capabilities that enable you to move towards a more regenerative paradigm?

What is the dominant paradigm of your bioregion?
 What is the paradigm you are working towards?

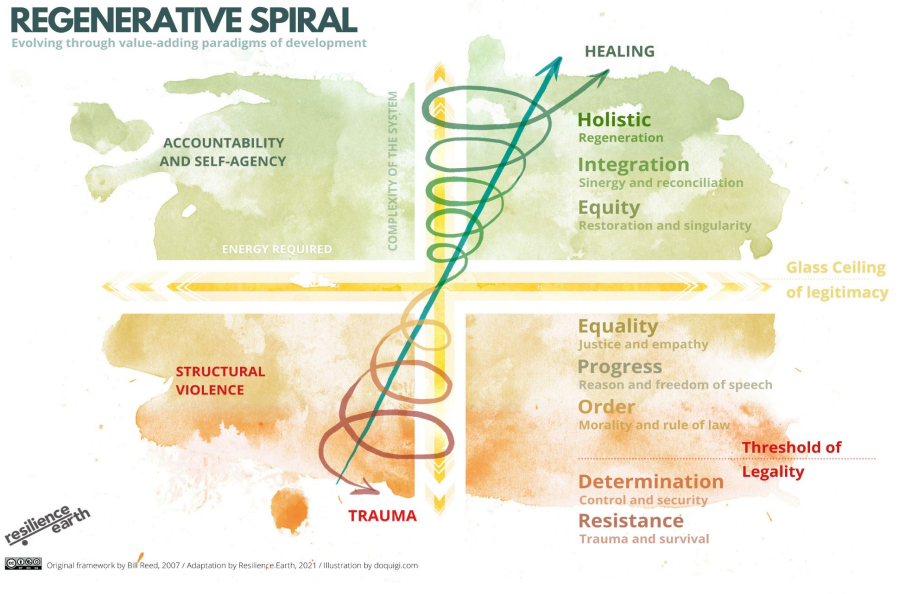


What support do you need from your local government and other stakeholders to do the work you want to do?

What restrictions do you face that prevent you from moving towards a more regenerative paradigm?

What are the capabilities that enable you to move towards a more regenerative paradigm?

What is the dominant paradigm of your bioregion?
 What is the paradigm you are working towards?

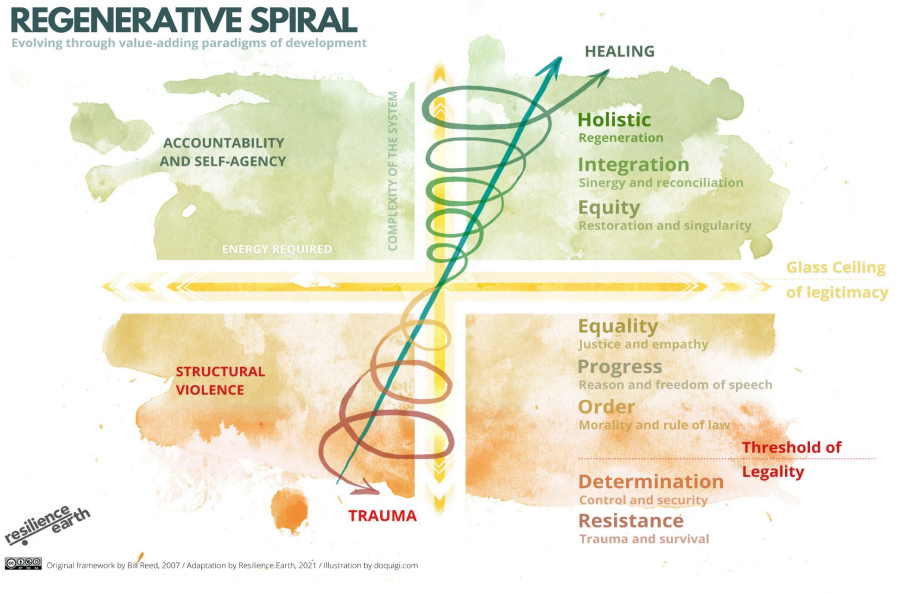


What support do you need from your local government and other stakeholders to do the work you want to do?

What restrictions do you face that prevent you from moving towards a more regenerative paradigm?

What are the capabilities that enable you to move towards a more regenerative paradigm?

What is the dominant paradigm of your bioregion?
 What is the paradigm you are working towards?

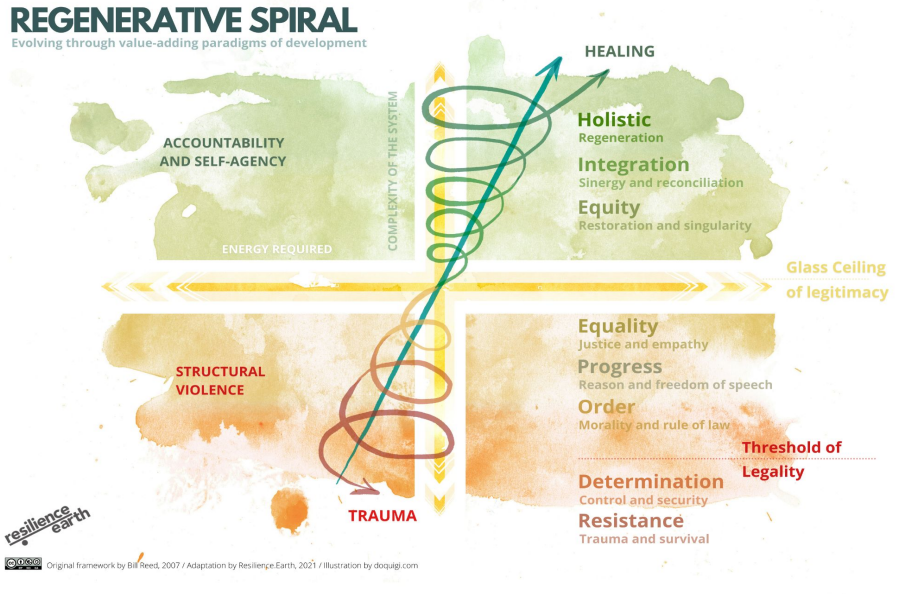


What support do you need from your local government and other stakeholders to do the work you want to do?

What restrictions do you face that prevent you from moving towards a more regenerative paradigm?

What are the capabilities that enable you to move towards a more regenerative paradigm?

What is the dominant paradigm of your bioregion?
 What is the paradigm you are working towards?

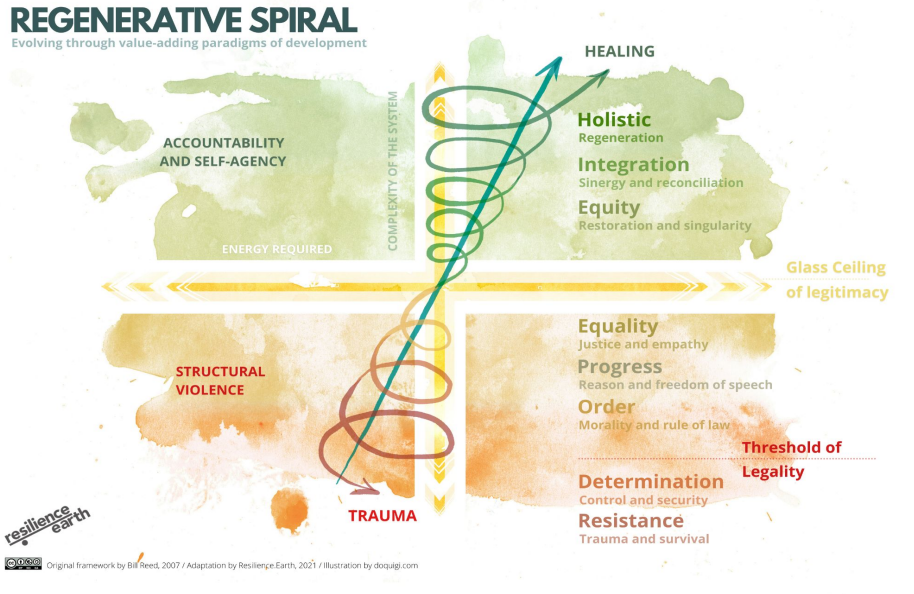


What support do you need from your local government and other stakeholders to do the work you want to do?

What restrictions do you face that prevent you from moving towards a more regenerative paradigm?

What are the capabilities that enable you to move towards a more regenerative paradigm?

What is the dominant paradigm of your bioregion?
 What is the paradigm you are working towards?

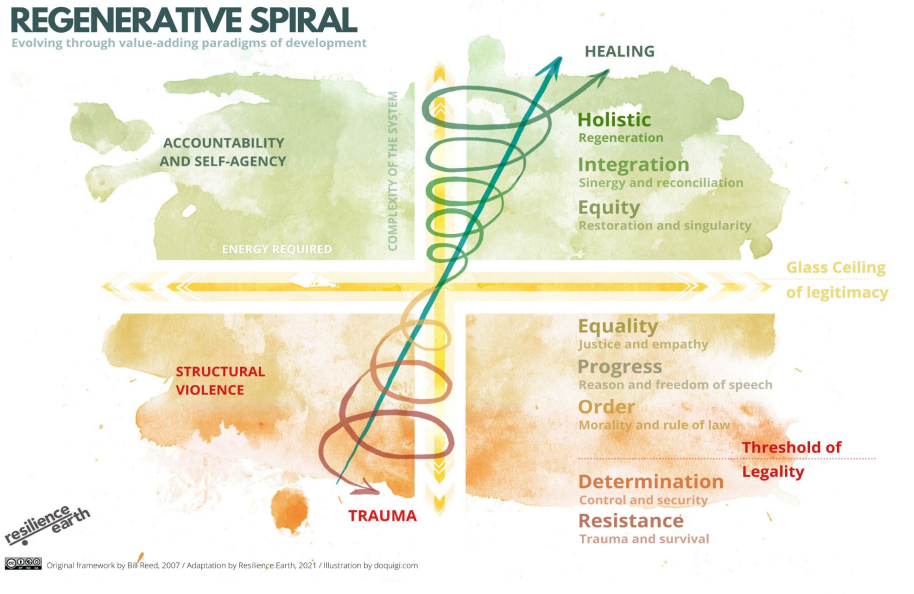


What support do you need from your local government and other stakeholders to do the work you want to do?

What restrictions do you face that prevent you from moving towards a more regenerative paradigm?

What are the capabilities that enable you to move towards a more regenerative paradigm?

What is the dominant paradigm of your bioregion?
 What is the paradigm you are working towards?

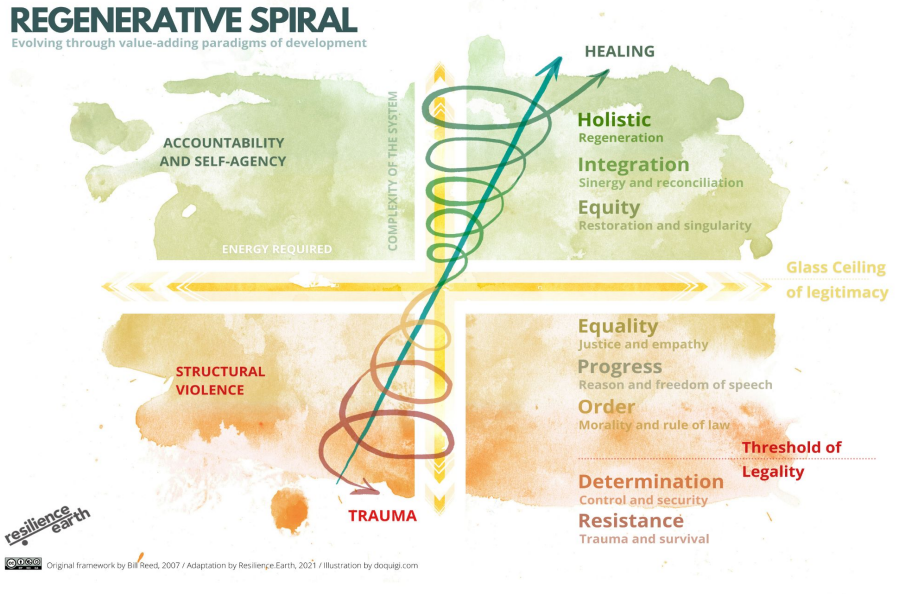


What support do you need from your local government and other stakeholders to do the work you want to do?

What restrictions do you face that prevent you from moving towards a more regenerative paradigm?

What are the capabilities that enable you to move towards a more regenerative paradigm?

What is the dominant paradigm of your bioregion?
 What is the paradigm you are working towards?

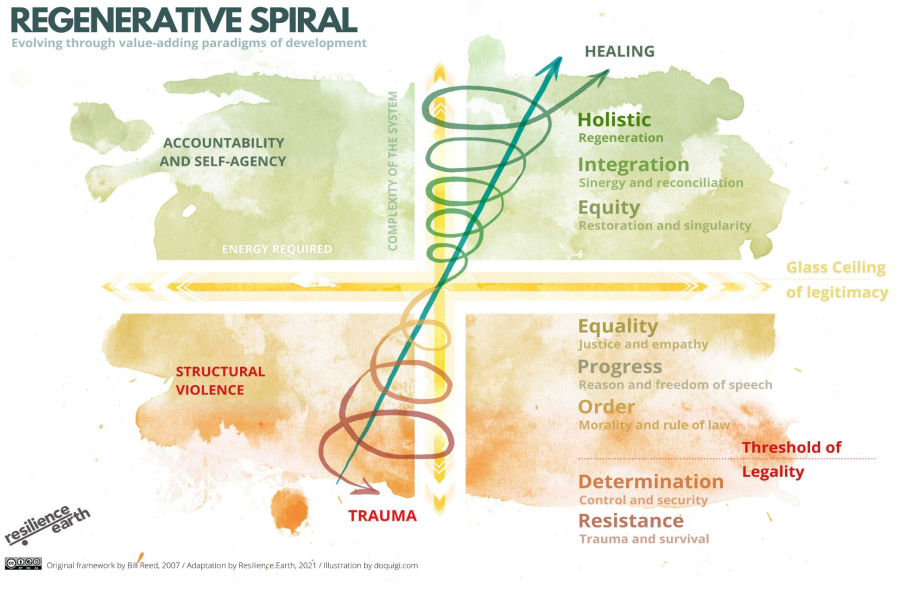


What support do you need from your local government and other stakeholders to do the work you want to do?

What restrictions do you face that prevent you from moving towards a more regenerative paradigm?

What are the capabilities that enable you to move towards a more regenerative paradigm?

What is the dominant paradigm of your bioregion?
 What is the paradigm you are working towards?



What support do you need from your local government and other stakeholders to do the work you want to do?

What restrictions do you face that prevent you from moving towards a more regenerative paradigm?

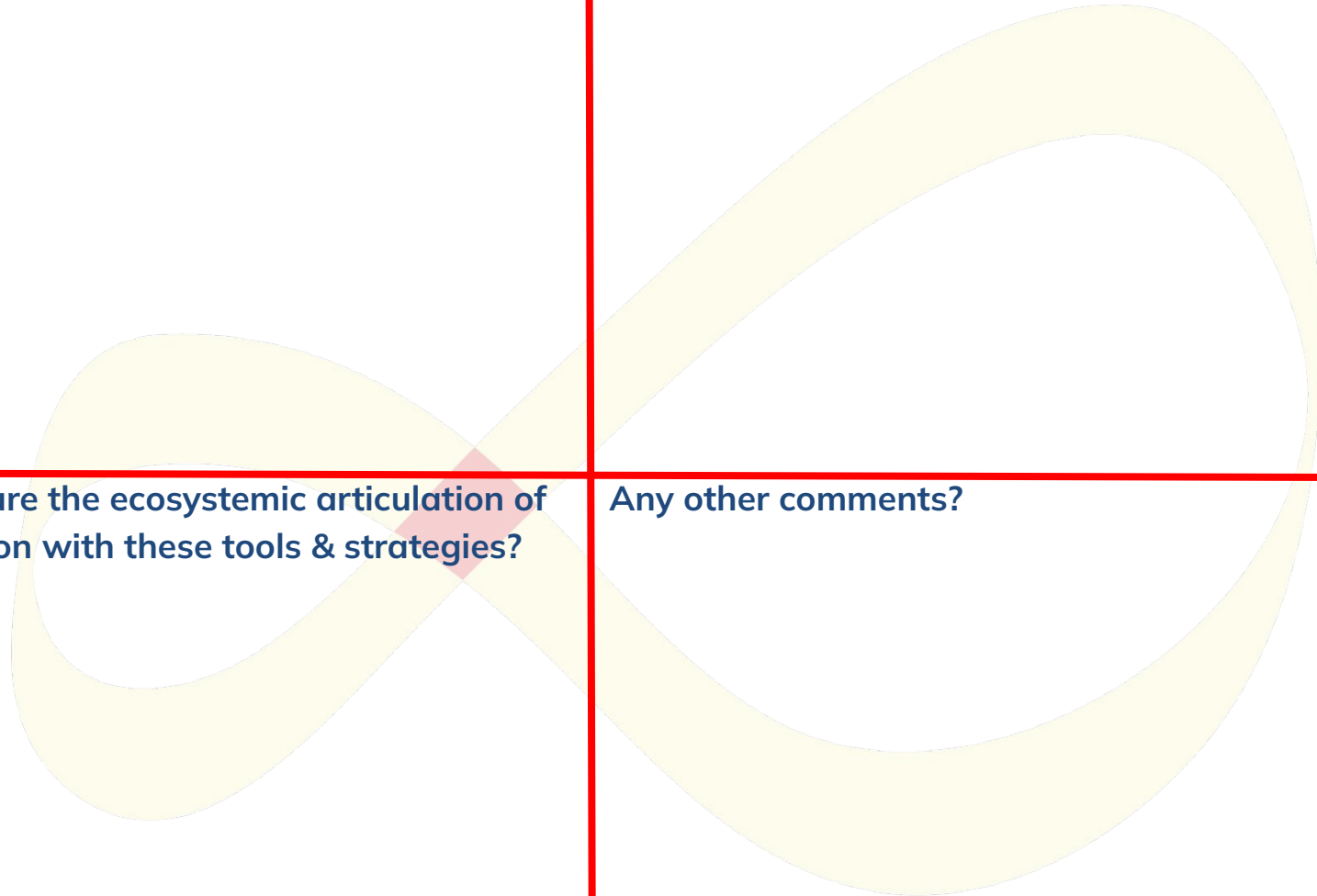
What are the capabilities that enable you to move towards a more regenerative paradigm?

LOCAL: How do you think these tools & strategies can bring value to your work?

BIOREGIONAL / THEMATIC: Do you see any value-adding synergies with other organisations or projects? If so, which?

EU: How can we nurture the ecosystemic articulation of community catalysation with these tools & strategies?

Any other comments?



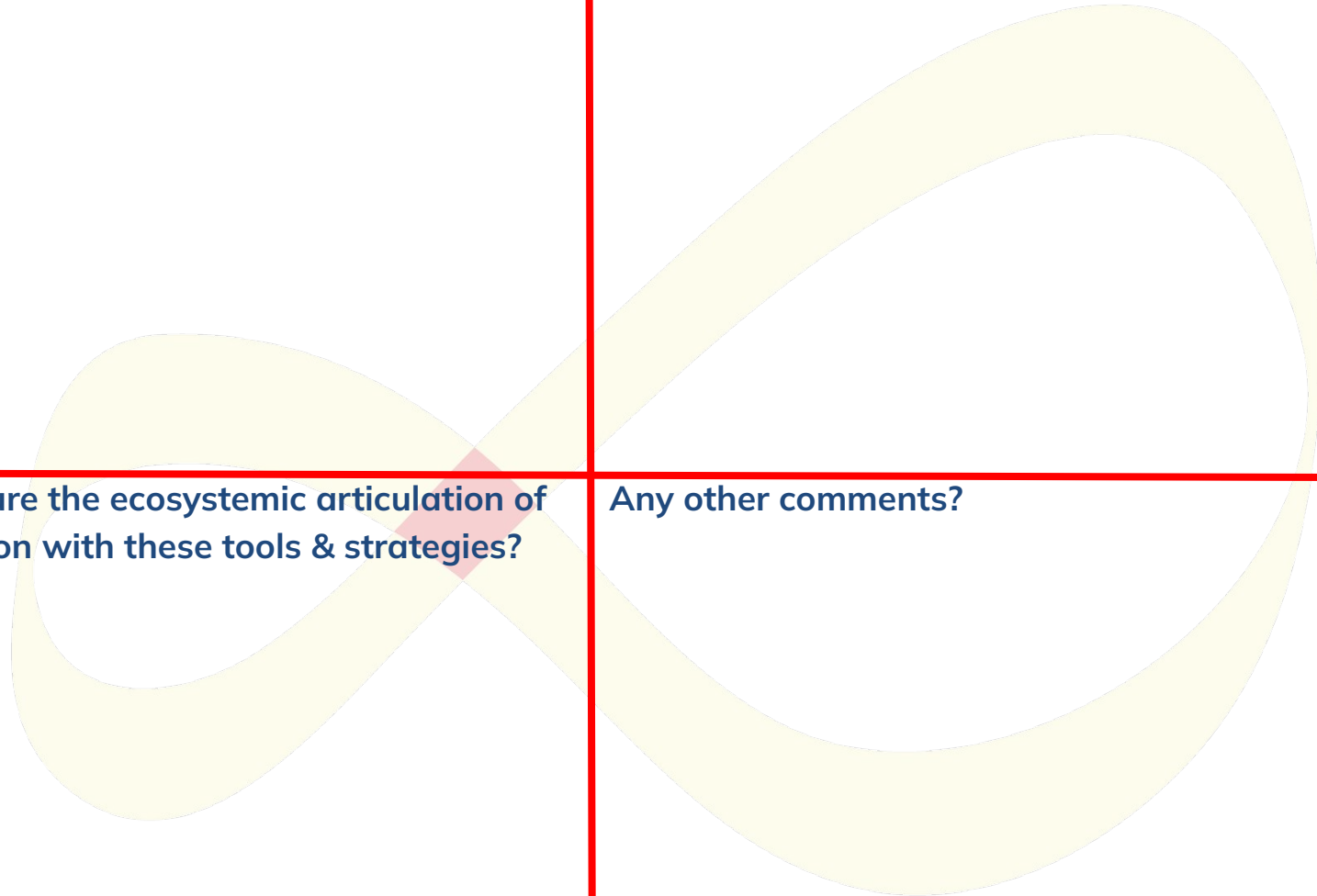


LOCAL: How do you think these tools & strategies can bring value to your work?

BIOREGIONAL / THEMATIC: Do you see any value-adding synergies with other organisations or projects? If so, which?

EU: How can we nurture the ecosystemic articulation of community catalysation with these tools & strategies?

Any other comments?





LOCAL: How do you think these tools & strategies can bring value to your work?

BIOREGIONAL / THEMATIC: Do you see any value-adding synergies with other organisations or projects? If so, which?

EU: How can we nurture the ecosystemic articulation of community catalysation with these tools & strategies?

Any other comments?

LOCAL: How do you think these tools & strategies can bring value to your work?

BIOREGIONAL / THEMATIC: Do you see any value-adding synergies with other organisations or projects? If so, which?

EU: How can we nurture the ecosystemic articulation of community catalysation with these tools & strategies?

Any other comments?

